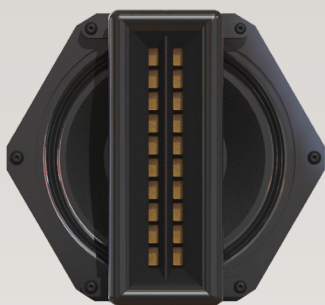




6.5HD-AW



True Coaxial Drivers



70V / 100W Toroidal Transformer

6.5 HD-AW-L | 6.5 HD-AW-S

Description

The 6.5HD-AW is a *high definition, ultra-high fidelity* full range loudspeaker featuring a *6" Planar Magnetic Ribbon* and a *6.5" woofer* in a true coaxial configuration. The compact, trapezoidal all weather, molded composite enclosure with an *"IP-65" rating*, has been designed with unique waveguides delivering excellent dispersion and fidelity. *True coaxial drivers* produce a *perfectly symmetrical coverage pattern* and *lower distortion* due to the alignment's acoustic filter effect. Resulting in an evenly dispersed, *audiophile-quality* sound even at the highest output levels.

Features

- Ultra-fast transient response and higher Instantaneous peak level for faithful signal
- Wide horizontal dispersion for excellent stereo imaging and larger listening area
- Well controlled vertical dispersion reduces floor and ceiling reflections and yields longer listening distances
- Robust, molded urethane composite enclosure for permanent outdoor installations
- All weather, waterproof drive components: stainless steel, powder coated hardware
- Unique woofer and ribbon wave guides for better dispersion and fidelity
- Galvaneal, powder coated steel grill with reticulated foam
- 70V 100W custom Toroidal Transformer option for long wire runs & distributed audio

Scan the QR Code for full instructions for this product.





Landscape Stake Mount



Stake Mount Included



Surface Mount Bracket

Available in either 8ohm or 70V. The 70V wiring model arrives with a high-performance, custom built 70 Volt 100 Watt Toroidal Transformer, offering low insertion loss and linear response for 70V wiring.

The loudspeakers are available as either Landscape (6.5HD-AW-L model) or Surface Mount (6.5HD-AW-S model), each available with its corresponding mounting accessories, and in either Black or White.

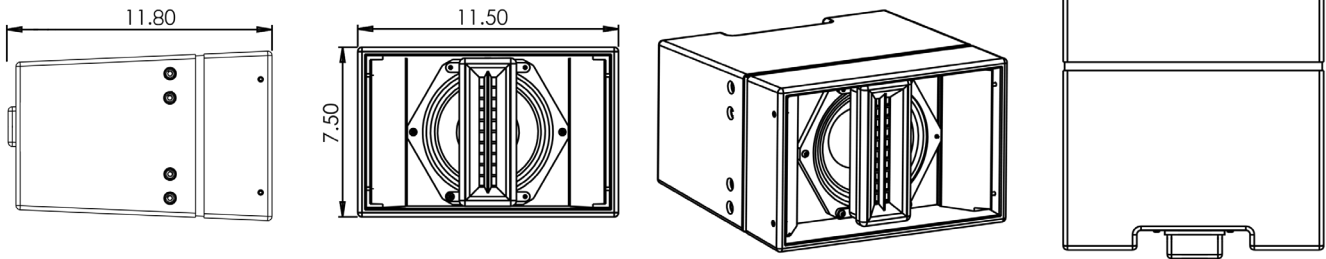
Landscape Mount: Features Key

- 1 • Landscape Stake Mount, with pan & tilt
(Included in the 6.5HD-AW-L model only)
- 2 • Pigtail Connection
 - 70V 100W Custom Toroidal Transformer (Optional, as the 6.5HD-AW-L-70V model)
 - IP65 Rated
 - Available in either Black or White

Surface Mount: Features Key

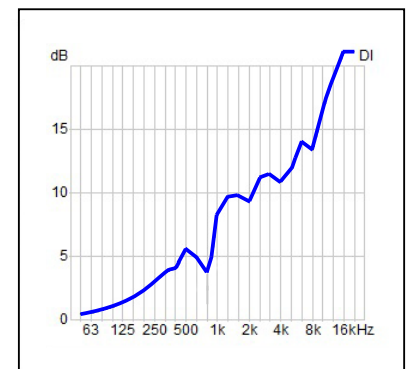
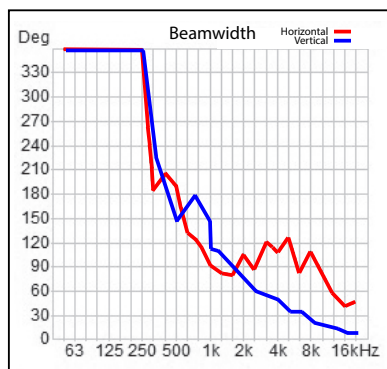
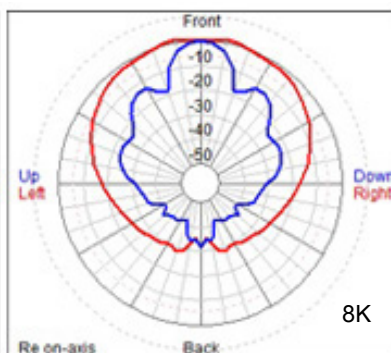
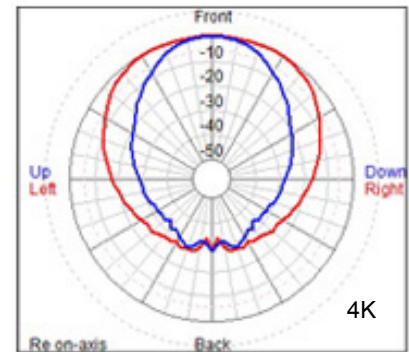
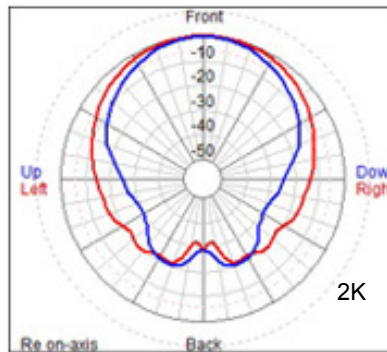
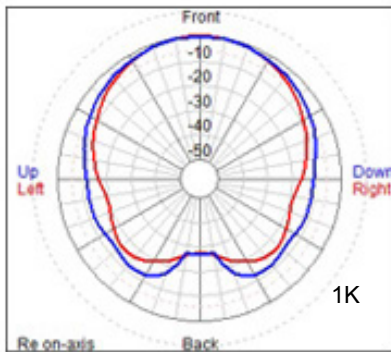
- 3 • Aluminum Surface Mount bracket, for wall or ceiling
(Included in the 6.5HD-AW-S model only)
- Pigtail Connection
 - 70V 100W Custom Toroidal Transformer (Optional, as the 6.5HD-AW-S-70V model)
 - IP65 Rated
 - Available in either Black or White

Specifications



System Type	Hybrid Coaxial, Ribbon, Woofer, Two-Way Full Range Loudspeaker
Driver Components	All Weather 6" Ribbon Driver + 6.5" Composite Cone Woofer
Frequency Response	50 Hz - 20 kHz (-10db) 78Hz - 20kHz +/- 3dB
Maximum SPL	109dB Continuous, 115dB Peak
System Coverage	110 degree horizontal, 60 degree vertical (averaged from 1k to 8k)
Sensitivity, 2.83V @ 1m	89 dB
Power Handling	100W AES, 200W Program 400W Peak
Recommended Amplifier Power	100W - 400W (FTC) @ 8 Ω
Rated Impedance OR Transformer	8 Ω nominal, 5.7 Ω min @ 160Hz OR 70V 100W
Crossover	Passive, Custom. Recommended HPF 45Hz, 12dB Butterworth
Input Connectors	16AGW x 2ft. Pigtail
Enclosure	All Weather, sealed Trapezoid Composite. IP-65 per IEC529
Mounting (Included)	Landscape Mount or Surface Mount (according to selection)
Dimensions (H x W x D)	7.4" x 11.5" x 11.8" 18.8cm x 29.21cm x 30cm
Weight, Net / Shipping	8Ω: 19.8Lbs (9kg) / 24.6Lbs (11.18kg) 70V: 22.8lbs (10.4kg) / 27.6lbs (12.5kg)
Warranty	Limited 5-Year Warranty

Speaker Directivity



Product SKUs

1 • LANDSCAPE MOUNT:

70V Model: 6.5HD-AW-L-70V-BK (Black) OR 6.5HD-AW-L-70V-WK (White)

80OHM Model: 6.5HD-AW-L-80OHM-BK (Black) OR 6.5HD-AW-L-80OHM-WK (White)

2 • SURFACE MOUNT:

70V Model: 6.5HD-AW-S-70V-BK (Black) OR 6.5HD-AW-S-70V-WK (White)

80OHM Model: 6.5HD-AW-S-80OHM-BK (Black) OR 6.5HD-AW-S-80OHM-WK (White)