



S11BP-70V | S11BP-8ohm

*OUTDOOR BURIAL SUBWOOFER
INSTALLATION MANUAL*





TABLE OF CONTENTS

1. Introduction	1
2. Specifications	2
3A. What's Included	3
3B. Recommended Tools	3
4. Pigtail Wiring Closeup	3
5. System Planning & Precautions	4
5A. System Planning: Sound Quality	4
5B. System Planning: Precautions	4
6. Recommended Burial Depth	5
7. Recommended Burial Wire	5
8. Recommended Wiring Instructions	6
8B. Optional Satellite Wiring: (Daisy Chained)	7
8C. 70V Wiring: (Using JB2100 Transformer)	7
8D. Final Wiring: Instructions	7
9. Troubleshooting	8
10. Technical Assistance	9
11. Limited 5 Year Warranty	10
12. Return Process	11

1. INTRODUCTION

Congratulations on selecting the Ambisonic S11BP Subwoofer, one of the finest outdoor speaker systems ever produced

At Ambisonic, we take pride in providing you with a high quality product, all speakers are designed to have excellent sound quality, longevity, and a simple installation process.

This instruction booklet covers the necessary information for a smooth installation. It includes the tool list you will need, step-by-step instructions for installation, troubleshooting tips for any errors that may occur, and all warranty information.

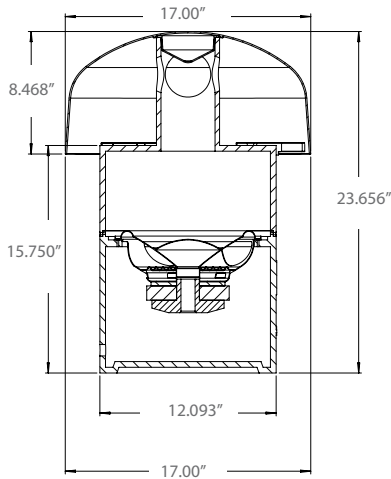
If for any reason you experience problems or if you have installation questions please call us at (844) 674-4461. Hours of operation are 8:00am to 5:00pm (Pacific Time), Monday through Friday.

Scan the QR Code for full instructions for this product.



2. SPECIFICATIONS

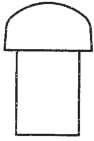
SPECIFICATIONS	S11BP-70V / S11BP-80HM SUBWOOFER
System Type	Vertical Pass Subwoofer
Driver Components	11" All Weather Dual Voice Coil Polypropylene Woofer
Frequency Response	41Hz – 150Hz (+/- 3dB)
Max SPL @ 1m	113dB Continuous, 119dB Peak
Sensitivity, 1m/2.83V	90dB
Power Handling	200W x 2 AES 400W X 2 Peak
Input Connectors	Pigtail with Waterproof Wire Nuts
Enclosure	All weather, molded composite
Installation	In-Ground, Recommended Depth 9" (22 cm)
Transformer (S11BP-70V)	In-Ground 2 X 70V 100W (JB2100 Transformer)



DIMENSIONS	S11BP-70V / S11BP-80HM SUBWOOFER
Canopy Dimensions	Ø 17" (432mm) Diameter • 8.40" (213 mm) Height
Enclosure Dimensions	Ø 12.20" (310 mm) Diameter x 23" (584mm) Height

*All product specifications are subject to change. Please refer to ambisonicsystems.com for latest information.

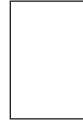
3A. WHAT'S INCLUDED



Subwoofer



Wire Nuts (2)

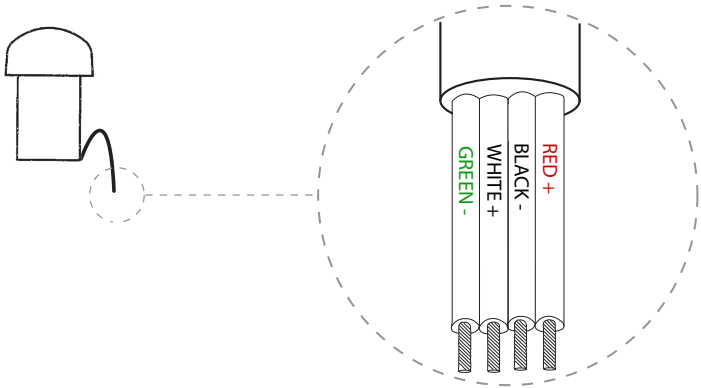


Start Guide

3B. RECOMMENDED TOOLS

- Direct Burial Wire
- Speaker Wire
- Shovel
- Screwdrivers
- Wire Stripper
- Measuring Tape

4. PIGTAIL WIRING CLOSEUP



Includes a pair of silicone filled wire nuts for the connection

Subwoofer Voice Coil #1
RED wire is positive (+)
BLACK wire is negative (-)

Subwoofer Voice Coil #2
WHITE wire is positive (+)
GREEN wire is negative (-)

5. SYSTEM PLANNING & PRECAUTIONS

5A. SYSTEM PLANNING: SOUND QUALITY

Read these instructions before you start, to get a better understanding of the procedures. If possible, temporarily layout your speaker wires where you think you want to place the S11BP Subwoofer and test the system first. Moving the subwoofer around the environment may yield a better overall sound. Placing the S11BP Subwoofer next to buildings or walls will generally produce more bass, which may be desirable in many outdoor audio environments.

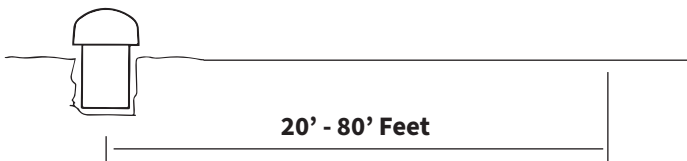
If you are concerned about determining speaker placement, a free design service to help you map the optimal speaker placements as well as recommended amplifier power and project scale.

Email: sales@originacoustics.com for more information.

5B. SYSTEM PLANNING: PRECAUTIONS

Before digging, confirm there are **NO** subterranean obstructions such as water or gas lines, sprinkler pipes or electrical conduits.

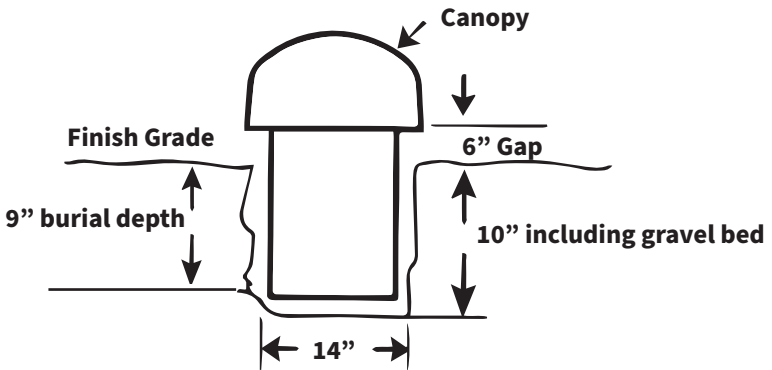
1) Locate the S11BP Subwoofer between 20 - 80 feet from the optimum listening area. Make sure the area will not flood with standing water.



2) After establishing a location, determine if the Subwoofer will be buried or simply placed on top of the ground. In either situation be sure that the Subwoofer is “Level” and “Plumb”.

6. RECOMMENDED BURIAL DEPTH

For in-ground burial of the S11 BP-IG Subwoofer, dig a hole approximately 14" diameter x 12" deep. Prepare a 1-2" deep "bed" for the Subwoofer that is reasonably free of voids and large rocks. Place the Subwoofer into the prepared hole making sure it is "Level" and "Plumb". Back fill as required, leaving a space (gap) of about 6" between the bottom of the Canopy and the finished grade. This space (gap) is where the bass sound emanates from.



7. RECOMMENDED BURIAL WIRE

BURIAL INSTALLATION

Wire Length	Wire Gauge
0 - 100' (0 - 30m)	16
150' - 300' (45 - 91m)	14
300' - 500' (91 - 152m)	12

8. RECOMMENDED WIRING INSTRUCTIONS

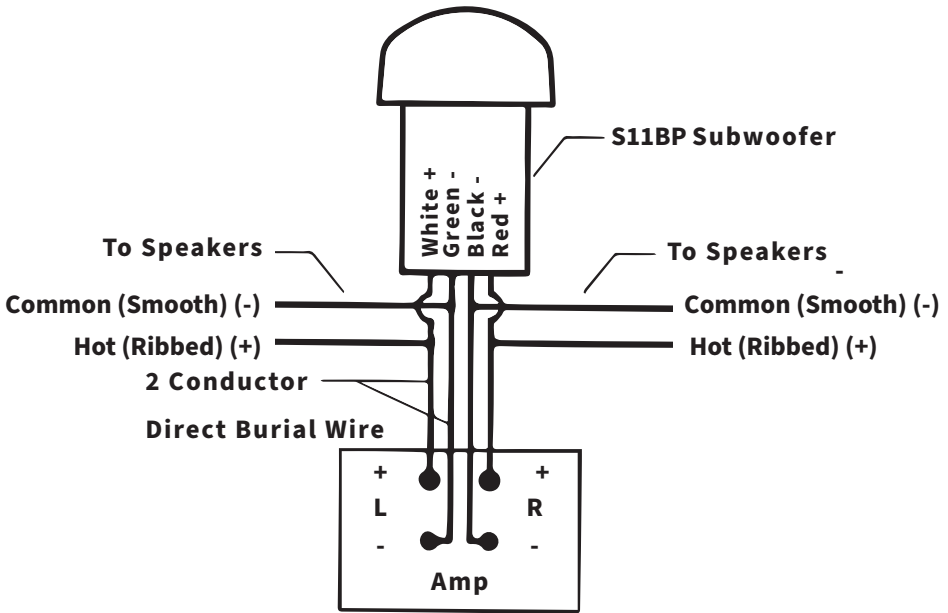
1) Determine the appropriate gage direct burial cables.

Note: Polarity does matter.

Use “Ribbed” Hot for all (+) Positive connections

Use “Smooth” Common for all (-) Negative connections

2A) Wire amplifier to Subwoofer using two (2) parallel 1-4 or appropriate gage for direct burial cables for “Left & Right” channels.



IMPORTANT: Connect polarity exactly as illustrated in this diagram.

Positive (+) to Positive(+)

Negative (-) to Negative(-).

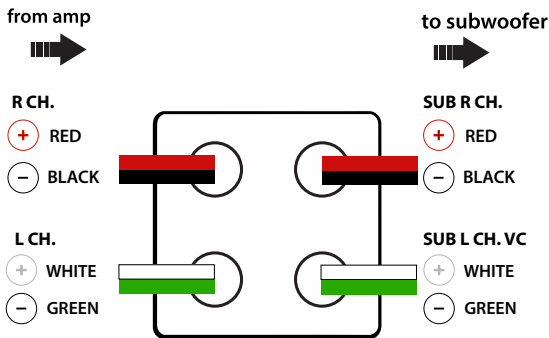
NOTE: DO NOT BURY THE ENCLOSURE UNTIL ALL WIRING HAS BEEN COMPLETED.

8B. OPTIONAL SATELLITE WIRING: (Daisy Chained)

2B) Wire "Left" speakers to Subwoofer In parallel.

2C) Wire "Right" speakers to Subwoofer in parallel.

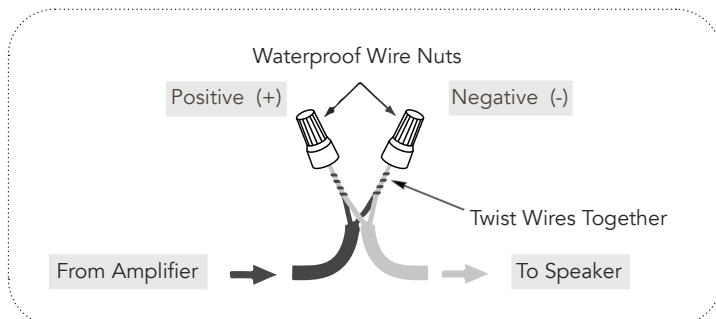
8C. 70V WIRING (Using JB2100 Transformer)



8D. FINAL WIRING INSTRUCTIONS

3) Connect the direct burial cable to each speaker wire, connections should be made with silicone filled wire connectors (nuts) or appropriate junction boxes.

4) Test your system prior to backfilling. If the system is operating properly, backfill and landscape as required.



9. TROUBLESHOOTING

If you have a problem, try isolating it first. For example, if you're playing a DVD and there is no sound, try replacing the DVD with an MP3 player to see if you get sound. If it does work, then the problem is with the television, DVD player, or the cables connecting them. If it doesn't work, the problem will be with the amplifier, speakers, or those cables.

Problem	Possible Cause
No Sound	The volume may be turned down or muted. Check the volume settings on both the amplifier and the DVD player/television/computer/etc.
No Sound	Make sure the proper source is selected on the amplifier or receiver.
No Sound	Check the cord connecting the amplifier with the source. The cord may be damaged or plugged into the wrong input or output.
No Sound	Check the wires connecting the amplifier with the speakers. Make sure they're connected properly and not damaged in any way.
No Sound	Check the Gain levels.
No Sound	Check the Input routing.
Poor Sound Quality	If you hear something like static, or the sound is cutting in and out, check the audio cables. If the problem increases when a cable is being moved, then the cable is most likely faulty or not connected properly.
Poor Sound Quality	Today's audio systems may have several places to adjust the volume, for example your MP3 player may have a volume control, and your amplifier may also have one. Check to be certain that the volume isn't turned up past 80% on any device.
Poor Sound Quality	Try changing sources to be certain that the selection you've chosen is a good quality recording.

10. TECHNICAL ASSISTANCE

If you have any questions or concerns about installing or using this product, you can reach us through one of the following methods:

Phone: (844) 674 - 4461

Hours of operation: 8:00am - 5:00pm (Pacific Time), Mon - Fri

Email: sales@originacoustics.com

If you are having technical trouble, please include the model number and briefly explain what steps you took to resolve the problem in your email, or be prepared to answer these questions over the phone. If you are considering returning the product, it's required that you contact Ambisonic prior to any return attempts. This way we can determine if the issue can be resolved without returning the product, or if needed we can provide instructions and support for the return process.

11. LIMITED 5 YEAR WARRANTY

Ambisonic warrants to the original retail purchaser only that this Ambisonic product will be free from defects in materials and workmanship, provided the speaker was purchased from an Ambisonic authorized dealer.

If the product is determined to be defective, it will be repaired or replaced at Ambisonic's discretion. If the product must be replaced yet it is no longer manufactured, it will be replaced with a model of equal to or greater value that is the most similar to the original. If this is the case, installing the replacement model may require mounting modifications; Ambisonic will not be responsible for any such related costs.

11A. REQUIREMENTS & WARRANTY COVERAGE

This warranty may not be valid if the product was purchased through an unauthorized dealer. This warranty only applies to the individual that made the original purchase, and it cannot be applied to other purchases. The purchaser must be prepared to provide proof of purchase (receipt). This warranty will not be valid if the identifying number or serial number has been removed, defaced, or altered.

**All warranties and warranty conditions are subject to change.*

Please refer to www.ambisonicsystems.com for the latest information.

12B. NOT COVERED BY WARRANTY

- Accidental damage
- Damage caused by abuse or misuse
- Damage caused by attempted repairs/modifications by anyone other than Ambisonic or an authorized dealer
- Damage caused by improper installation
- Normal wear, maintenance, and environmental issues
- Damage caused by voltage inputs in excess of the rated maximum of the unit
- Damage inflicted during the return shipment
- Performance issues caused by modifications. ie: painting of the shell.

13. RETURN PROCESS

Before making any return attempts, it is required that you first contact Ambisonic customer support team. Return product to Ambisonic or your dealer, either in person or by mail. It's preferable if the product is returned in the original packaging. If this isn't possible, the customer is responsible for insuring the shipment for the full value of the product.

This warranty is in lieu of all other expressed or implied warranties. Some states do not allow limitations on implied warranties, so this may not apply depending on the customer's location. (For more information, see Magnuson-Moss Warranty Act.)



06-19-24

6975 S Decatur Blvd, Las Vegas, NV 89118 • www.ambisonicsystems.com • 844-674-4461

©2024 Ambisonic. All copyrighted, trademarked and patented elements mentioned herein are the sole property of Ambisonic Systems.