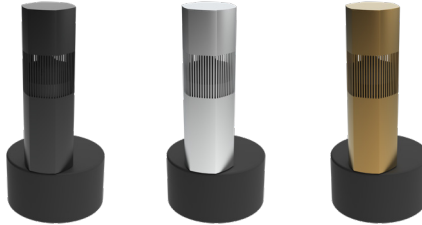




Ambisonic Bollard Collection

The Landscape Bollard 6



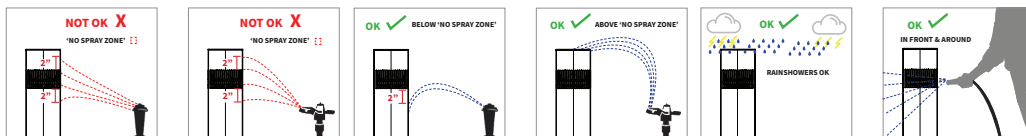
ALSB64BL • ALSB64S • ALSB64CH

MODEL	ALSB64BL • ALSB64S • ALSB64CH
COLOR	Black • Silver • Champagne
Woofer	6 ½" (165mm) Polypropylene Woofer
Midrange	4 ½" (115mm) Aluminum Midrange
Tweeter	1" (25mm) HD Aluminum Conical Ribbon Tweeter
Frequency Response	48HZ - 20KHZ
Power RMS	50W 50W
Power	100W 100W (Program) 200W 200W (Peak)
Impedance	6 Ω (Sub) / 4 Ω (Sat)
Transformer Taps	Selectable LoZ, or 70V: 50W Subwoofer 50W Midrange 100V: 50W Subwoofer 50W Midrange
Subwoofer Enclosure	Ø 12 ¾" (315mm) • 8 ¾" (212mm) Depth
Sleeve Dimensions	6 ⅞" x 5 1⅞" (158 x 148mm) Hexagonal Widths 18 ¾" (476mm) Height (includes 5mm sleeve base)
Total Height	27 1/16" (688mm)
Enclosure Material	Poly Composite, Weather Resistant Enclosure

Please refer to ambisonicsystems.com for the full installation guidelines.



Scan the QR Code for full instructions for this product.



SYSTEM PLANNING

The Landscape Bollards should be strategically placed to evenly distribute sound throughout the outdoor area. It's also recommended that the speakers be installed at a location such that the water sprinkler nearby (if any) does not spray the water jet into or +/- 2 inches from vertical slots of the bollard shell. Fully plan out the locations of all buried subwoofers and wires before beginning the installation process.

RECOMMENDED TOOLS

- Direct Burial Wire
- Speaker Wire
- Shovel
- Screwdrivers
- Wire Stripper
- Measuring Tape

BURIAL INSTALLATION

Wire Length	Wire Gauge
0 - 100' (0 - 30m)	16
50 - 150' (15 - 45m)	14
Over 100' (30m)	12

