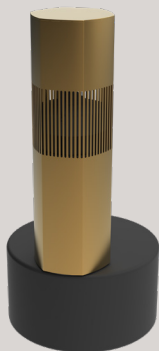


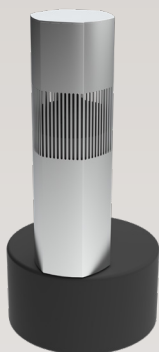


# Ambisonic Bollard Collection

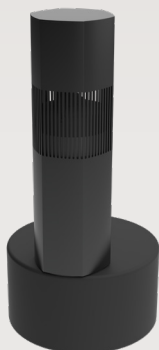
## Luxury Landscape Bollard 10



ALS B106CHK



ALS B106SK



ALS B106BLK

ALS B106CHK • ALS B106SK • ALS B106BLK

### Description

This Ambisonic Bollard Collection is the latest in luxury outdoor listening: a combination of the latest in high performance audio, unparalleled design, and construction. These are engineered to give you years of listening satisfaction and pleasure; the ported composite enclosure, and all components, are designed to withstand the harshest of environmental conditions in any permanent landscape installation.

Available in 3 sizes, you can select the optimum visual and acoustic impact required for any outdoor setting. Each comes with a high definition conical ribbon tweeter, offering **360° dispersion**, so your backyard, patio and pool areas will come alive with incredible clarity and detailed sound. Meanwhile, the integrated burial subwoofer delivers the punch, impact and clean tight bass necessary for the outdoors, perfectly complimenting the higher frequencies with the low.

Our Landscape Bollard 10 is the largest of the collection, offering a robust elegance that integrates into landscaping yet features a **massive 10" burial subwoofer**, a **6 ½" high power mid-range**, and lastly, in true Ambisonic style, an iconic **1" high definition conical ribbon tweeter**.

The Landscape Bollard 10 is made to measure a **tall and sleek 27" height above ground**, with all weather hexagonal exterior sleeves obtainable in **3 colors**: Champagne, Stargazing Silver, and Midnight Black.

Scan the QR Code for full instructions for this product.



## Conical Ribbon Driver

The Landscape Bollard 10's highly efficient conical ribbon driver features an ultra-sensitive aluminum diaphragm, energized by a neodymium motor, capable of accentuating your audio signals into the ultimate high fidelity reproduction, with minimal distortion.

Designed and constructed to project sound longer distances, it ensures those deeply important key transients and higher frequency nuances, for a powerful 360° outdoor sound immersion experience.



## Features

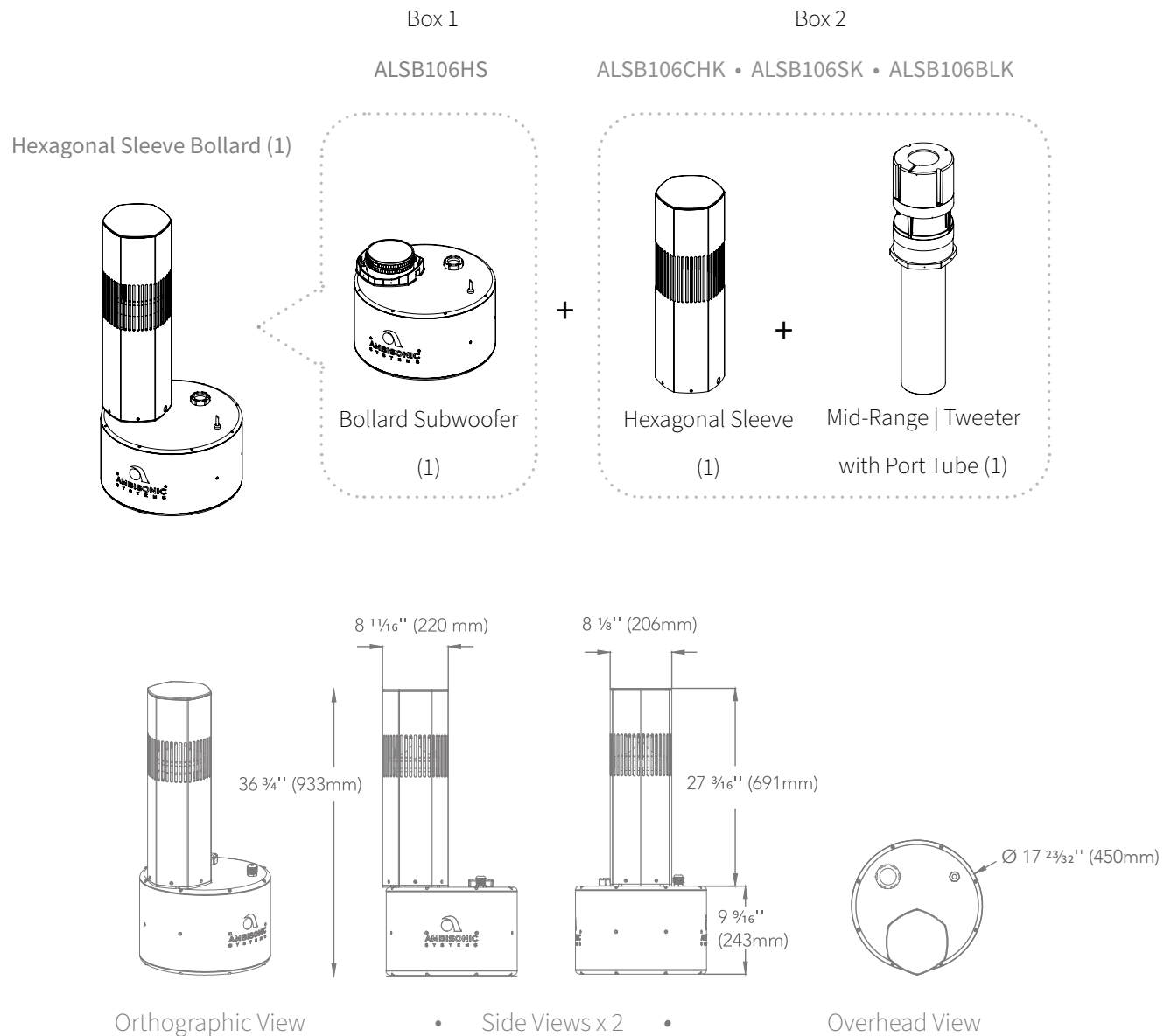
- 1• High Definition Conical Ribbon Tweeter

## Specifications

MODEL	ALSB106CHK • ALSB106SK • ALSB106BLK
COLOR	Champagne • Stargazing Silver • Midnight Black
Woofer	10" (254mm) Polypropylene Woofer
Midrange	6 ½" (165mm) Polypropylene Midrange
Tweeter	1" (25mm) HD Aluminum Conical Ribbon Tweeter
Frequency Response	48HZ - 20KHZ
Power RMS	200W   100W
Program Power	400W   200W
Power Peak	800W   400W
Impedance	6 Ω (Sub) / 7 Ω (Sat)
Transformer Taps	Selectable LoZ, or 70V: 200W Subwoofer   100W Midrange 100V: 200W Subwoofer   100W Midrange
Subwoofer Enclosure	Ø 17 ²³⁄₃₂" (450mm) • 9 ⁹⁄₁₆" (243mm) Depth
Sleeve Dimensions	8 ¹⁄₁₆" x 8 ¹⁄₈" (220 x 206mm) Hexagonal Widths 27 ³⁄₁₆" (691mm) Height (includes 5mm sleeve base)
Total Height	36 ¾" (933mm)
Enclosure Material	Poly Composite, Weather Resistant Enclosure

\*All product specifications are subject to change. Please refer to [ambisonicsystems.com](http://ambisonicsystems.com) for latest information.

## Line Drawings



\*All product specifications are subject to change. Please refer to [ambisonicsystems.com](http://ambisonicsystems.com) for latest information.