



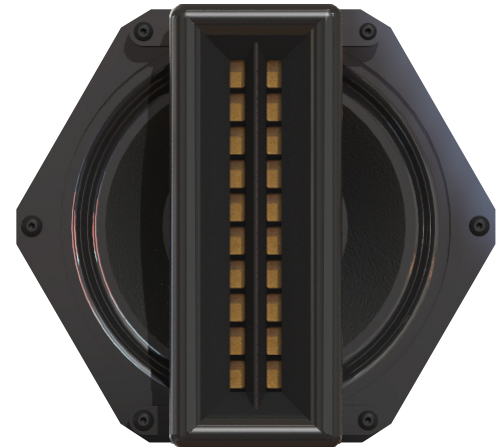
Immersive HD 6.5HD Loudspeaker



- Ultra-fast transient response and higher instantaneous peak level for faithful signal reproduction and improved dynamic range
- Wide Horizontal dispersion for excellent stereo imaging and larger listening area
- Well controlled vertical dispersion reduces floor and ceiling reflections and yields longer listening distances
- Robust enclosure and components
- Unique woofer and ribbon wave guides for better dispersion and fidelity
- All stainless steel hardware and powder coated mounting brackets
- Trapezoidal form factor allows the 6.5HD to be used as a building block (module) for the ultimate high fidelity, high definition line arrays

6.5HD Description:

The **6.5HD** is a high definition, ultra-high fidelity full range loudspeaker featuring a 6" Planar Magnetic Ribbon and a 6.5" woofer in a true coaxial configuration. The compact, trapezoidal enclosure has been designed with unique waveguides which deliver excellent dispersion and fidelity. Constructed of Baltic Birch with stiff internal bracing creating a colorless sonic enclosure.



True coaxial drivers produce a perfectly symmetrical horizontal coverage pattern and lower distortion due to the alignment's acoustic filter effect. Resulting in an evenly dispersed, audiophile-quality sound at the highest output levels.

6.5HD Applications:

Model **6.5HD** loudspeakers are ideally suited for indoor and outdoor installations and deliver audiophile sound quality for music playback and live performance applications.

6.5HD-AW "All Weather" Outdoor

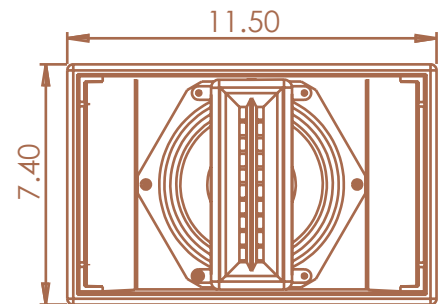
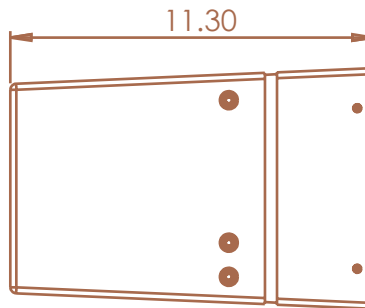
The all weather model **6.5HD-AW** has a molded composite enclosure, completely water proof with an "IP Rating 65" to ensure years of sonic satisfaction in the harshest of outdoor environments. Sun, rain, sleet or snow, this robust loudspeaker delivers the ultimate in audio quality with virtually no maintenance.



Immersive HD 6.5HD Loudspeaker

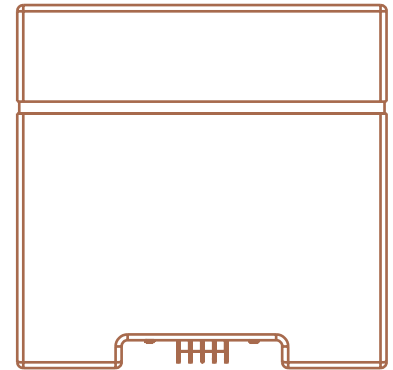
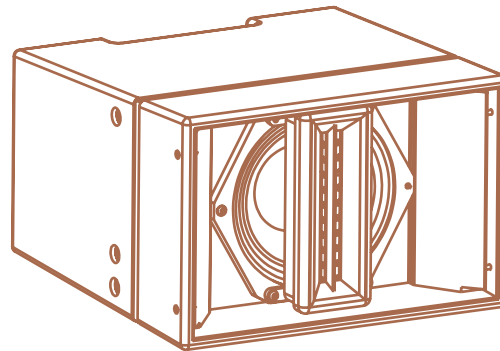


Included Universal Mount
for Models **6.5HD** & **6.5HD-AW**
(Walls, ceilings or under eaves)



(Pigtail Connection)

Included Landscape Mount
for Model **6.5HD-AW-L**
(Stake mount with pan & tilt)



SPECIFICATIONS

System Type	Hybrid Coaxial, ribbon, woofer, two-way full range loudspeaker
Driver Components	All-weather 6" ribbon driver + 6.5" composite cone woofer
Crossover	Passive, custom.
Frequency Response	40 Hz - 40 kHz
Maximum SPL	111db Continuous, 117db Peak
System coverage	110 degree horizontal, 40-degree vertical
Sensitivity, 1m/2.83V	91 dB
Power Handling	100W AES, 200W Program 400W Peak
Recommended Amplifier Power	100 W - 400W (FTC) @ 8 Ohms
Rated Impedance	8 Ohms
Input Connectors	Screw terminal barrier strip (6.5HD-AW-L 4ft. Pigtail)
Enclosure	Baltic Birch, sealed trapezoid (AW) All-weather, sealed trapezoid composite
Mounting Options	Universal Mount, Landscape Mount
Accessories (optional)	BKT-6.5HD
Dimensions, (H x W x D) inches (mm)	7.4" (18.8cm) x 11.5" (29.21cm) x 11.3" (28.7cm)
Weight, net	12Lbs (5.4kg) (AW) 15lbs (6.8kg)
Warranty	Limited 3-year warranty