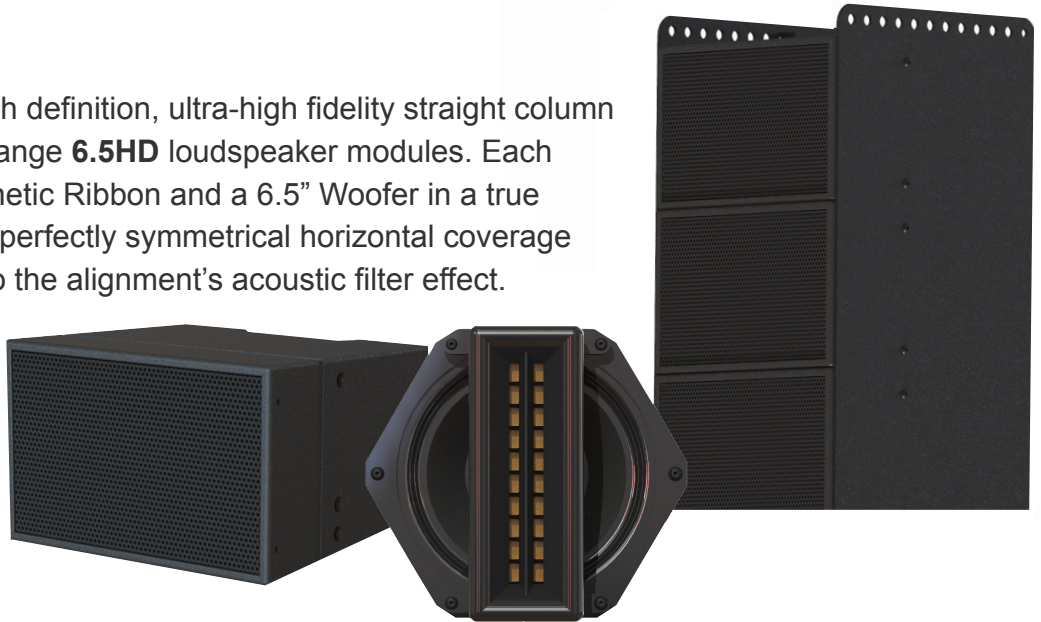




# Immersive **HD** Line Arrays

## Description:

Immersive **HD** Line Arrays are high definition, ultra-high fidelity straight column or curved arrays utilizing our full range **6.5HD** loudspeaker modules. Each module features a 6" Planar Magnetic Ribbon and a 6.5" Woofer in a true coaxial configuration producing a perfectly symmetrical horizontal coverage pattern and lower distortion due to the alignment's acoustic filter effect. Resulting in an evenly dispersed, audiophile-quality sound at the highest output levels. Perfect for installations in night clubs, live venues, houses of worship and performing arts theaters.



## Straight, Curved & Custom Fixed Array Features:

- Ultra-fast transient response and higher instantaneous peak level for faithful signal reproduction and improved dynamic range.
- Wide Horizontal dispersion for excellent stereo imaging and larger listening area.
- Tightly controlled vertical dispersion reduces floor and ceiling reflections and yields the ultimate long throw high definition system.
- Optional "All-Weather" (**AW**) enclosures.
- Unique woofer & ribbon wave guides for better dispersion and fidelity.
- All stainless-steel hardware and powder coated mounting brackets.
- Aircraft Aluminum side panels for strength, aesthetics and simple single box mounting or hanging with built in fly points.
- Optional Pan and Tilt wall mount kit. Minimum space requirements.
- NL4 space saving vertical position.

## 6.5HD-AW "All Weather" Outdoor

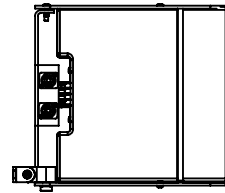
The "All-Weather" model **6.5HD-AW** is a completely water proof, molded composite enclosure, with an "IP Rating 65". In the sun, rain, sleet or snow, our Line Arrays assembled with the **6.5HD-AW** modules deliver the ultimate in audiophile quality sound and are virtually maintenance free ensuring years of sonic satisfaction in the harshest of outdoor environments.



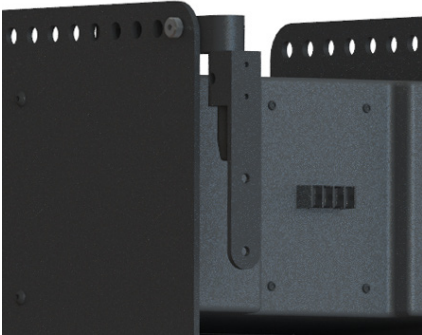
# Immersive HD Line Arrays

Immersive **HD** Line Arrays have been designed to be an ergonomic solution for simple installation and clean line aesthetics. Integrated “Fly Points” are standard on all of our Line Array configurations, no need to purchase that expensive and unsightly rigging frame. The built in universal wall mounting receiver bracket has hole patterns for multiple rear mounting options. Standard NL4 Speakon I/O low clearance connections. Optional “Pan & Tilt” wall mounting kit features 90 degrees horizontal pan from left or right and vertical down angle between 0–2.5 degrees for low profile mounting of “Straight Arrays”. All Immersive **HD** series Line Array products are available in either indoor or outdoor “All-Weather” versions with your choice of low gloss black or white finish. Custom finishes available upon request.

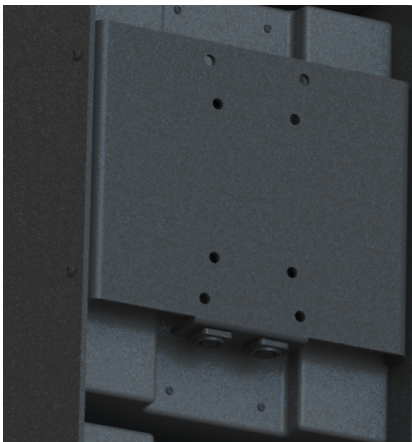
## Example: 8600 Line Array



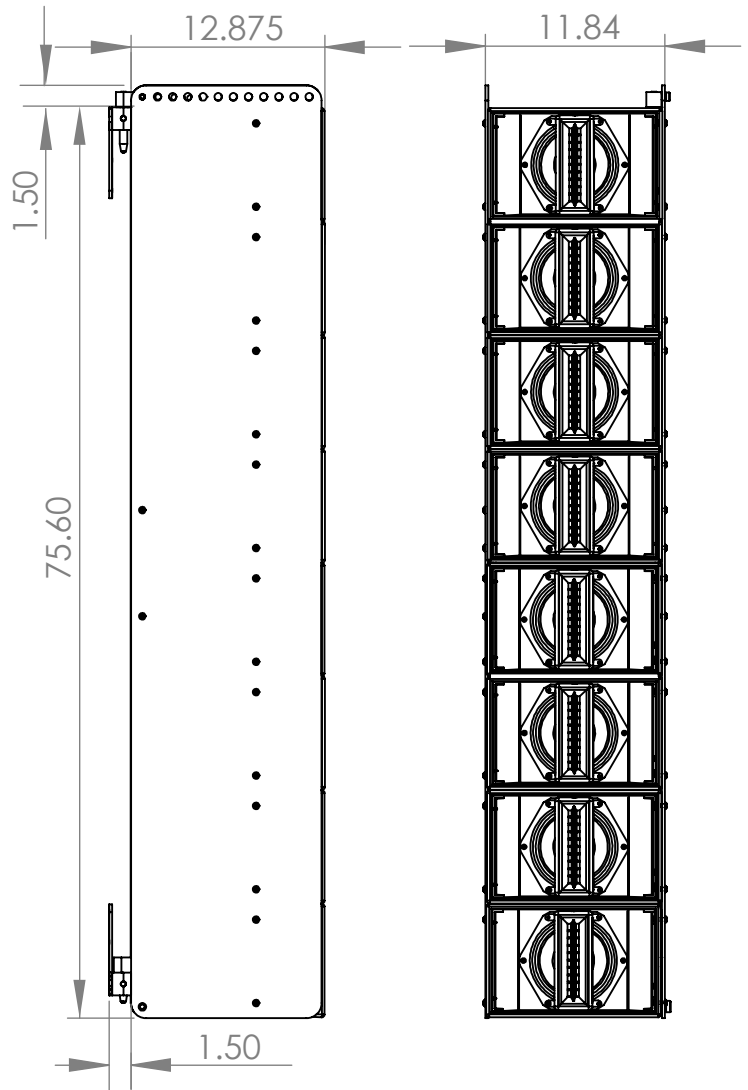
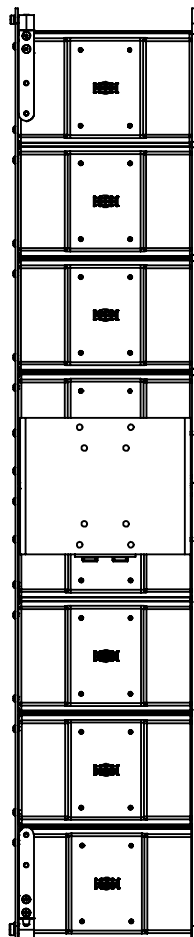
Multiple 1/2"Ø Integrated “Fly Points”.



Optional low profile “Pan & Tilt” wall mount kit. Up to 90 degrees horizontal pan from left or right and vertical down angle between 0 - 2.5 degrees.



Universal wall mounting receiver bracket with NL4 Speakon Input and Through, low clearance connections.





# Immersive HD Line Arrays

## STRAIGHT LINE ARRAY SPECIFICATIONS

System Type	Hybrid Coaxial, ribbon line array			
Driver Components ( <i>per module</i> )	6" planar magnetic ribbon driver & 6.5" composite cone woofer			
Frequency Response	40 Hz - 20kHz			
System coverage	110 degree horizontal, vertical defined by array height			
Input Connectors	NL4 Speakon x 2			
Enclosure Rack	Aircraft Aluminum			
Mounting Options	Built in Fly points, pan and tilt wall mount kit			
Accessories (optional)	BKT-PTWM, pan and tilt wall mount kit			
Warranty	Limited 3-year warranty			
MODEL	6600	8600	1060	1260
Model 6.5HD modules	6 Modules	8 Modules	10 Modules	12 Modules
Maximum SPL	125db Continuous 131db Peak	129db Continuous 135db Peak	131db Continuous 137db Peak	133db Continuous 139 Peak
Sensitivity, 1w / 1 meter	98	100	101	102
Power Handling (AES / Program / Peak)	600 / 1200 / 2400	800 / 1600 / 3200	1000 / 2000 / 4000	1200 / 2400 / 4800
Recommended Amplifier Power	600w-3000w (FTC) @ 4 ohms	800w-3200w (FTC) @ 4 ohms	1000w-4500w (FTC) @ 4ohms	1200w-5000w (FTC) @ 4ohms
Rated Impedance ( <i>Foot note 1 &amp; 2</i> )	6 ohms	4 ohms	3.2 ohms	6 ohms
Dimensions, (H x W x D) inches	46 x 11.84 x 12.875	60.8 x 11.84 x 12.875	75.6 x 11.84 x 12.875	90.4 x 11.84 x 12.875
Weight, Lbs.	6.5HD 6.5HD-AW	94.8 112.8	126.4 150.4	158 188

- 1) Stated impedance is standard wiring for single channel operation.  
 2) Custom wiring available for multi-channel operation.

## CURVED LINE ARRAY SPECIFICATIONS

System Type	Hybrid Coaxial, ribbon line array		
Driver Components ( <i>per module</i> )	6" planar magnetic ribbon driver & 6.5" composite cone woofer		
Frequency Response	40 Hz - 20kHz		
System coverage	110 degree horizontal, vertical defined by array height		
Input Connectors	NL4 Speakon x 2		
Enclosure Rack	Aircraft Aluminum		
Mounting Options	Built in Fly points, pan and tilt wall mount kit		
Accessories (optional)	Adaptive Technologies # MM060 & # MM120		
Warranty	Limited 3-year warranty		
MODEL	4625	6620	Custom Curved Arrays Per Request
Model 6.5HD modules	4 Modules	6 Modules	Audio specifications are similar to straight arrays dependent on the number of 6.5HD modules and articulation angles.  Dimension and weight specifications determined by configuration.
Maximum SPL	123db Continuous 129db Peak	125db Continuous 131db Peak	
Sensitivity, 1w / 1 meter	97	98	
Power Handling (AES / Program / Peak)	400 / 800 / 1600	600 / 1200 / 2400	
Recommended Amplifier Power	400w-1600w (FTC) @ 8 ohms	600w-3000w (FTC) @ 4 ohms	
Rated Impedance ( <i>Foot note 1 &amp; 2</i> )	8 ohms	6 ohms	
Dimensions, (H x W x D) inches	30.75 x 11.84 x 16.15	45.72 x 11.84 x 15.82	
Weight, Lbs.	6.5HD 6.5HD-AW	63.2 75.2	
		126.4 150.4	

- 1) Stated impedance is standard wiring for single channel operation.  
 2) Custom wiring available for multi-channel operation.